



WELCOME

CLIMATE EMERGENCY CONFERENCE 2024

*Councils and communities
reclaiming the climate emergency*



Climate
Emergency
Australia



Maribyrnong
CITY COUNCIL

Proudly supported by





ACKNOWLEDGEMENT OF COUNTRY

Everywhere on this continent, we are all on unceded Aboriginal land. We acknowledge that we are meeting today on the land of the Wurundjeri Woi Wurrung.

We thank and acknowledge the elders of all First Nations for looking after Country since the Dreamtime.

We will do all we can to look after it too, and to restore a safe climate for current and future generations of all species.



Break-out Block 1

Scaling up: big projects, big impacts



Climate
Emergency
Australia



Maribyrnong
CITY COUNCIL

Proudly supported by





Speakers:

- Michelle Van Gerrevink, Brimbank City Council - the Victorian Energy Collaboration
- Santiago Perrotto, Darebin City Council - Northcote Aquatic and Recreation Centre
- Dr. Heather Holmes-Ross, Mayor of Mitcham - Mitcham community renewables project
- Mike Woods, Latus - Heavy fleet electrification



Facilitator:

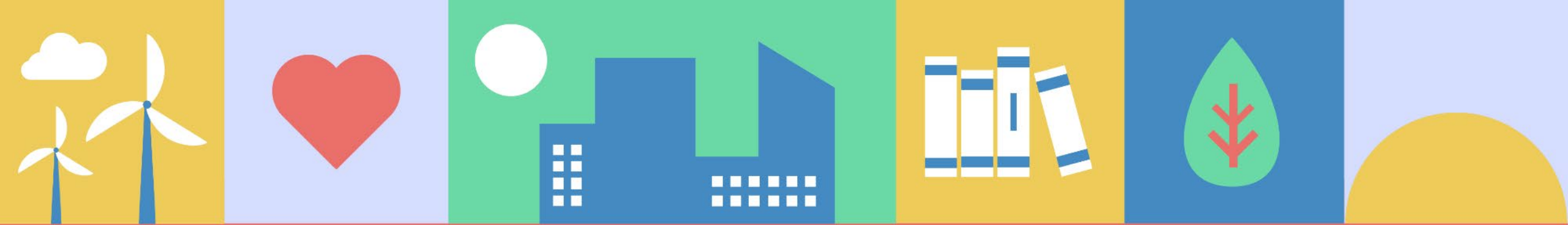
Michelle Van Gerrevink, Brimbank City Council



QUESTIONS AND ANSWERS

Go to: **slido.com**

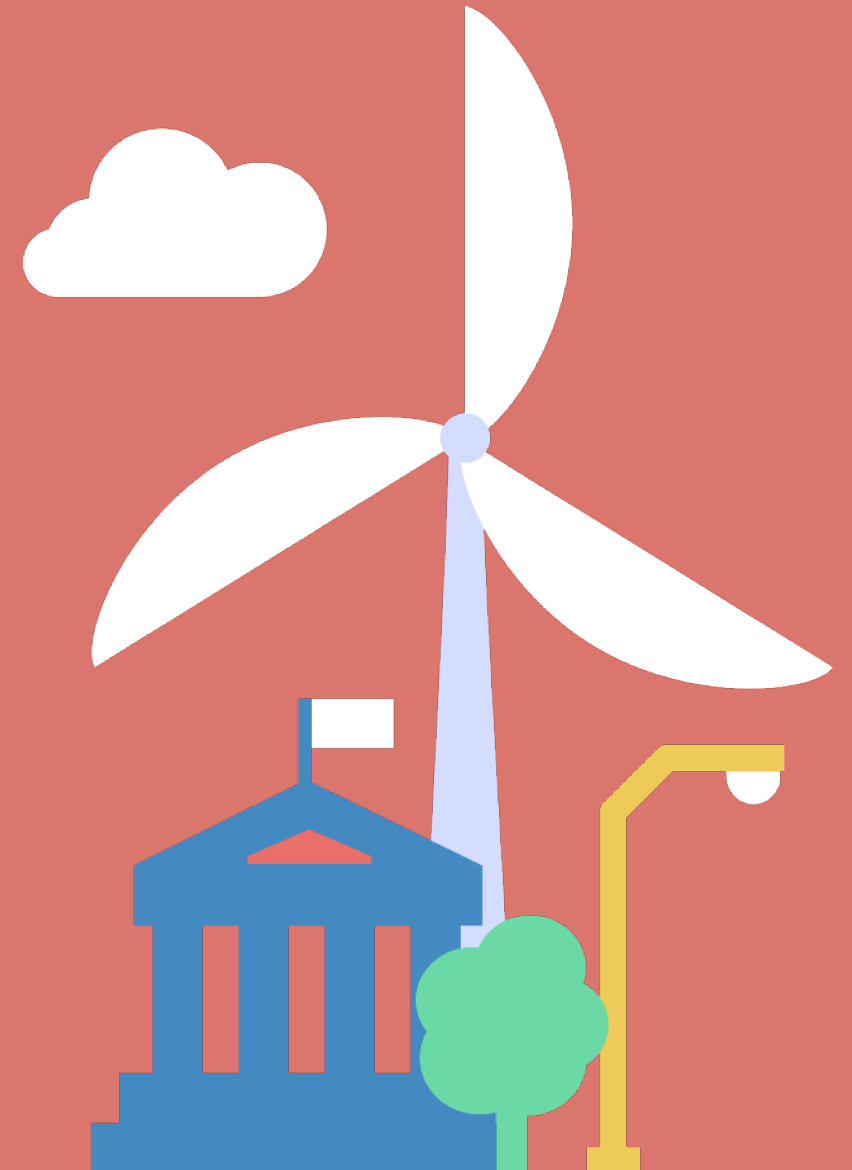
Enter event code: **9445716**



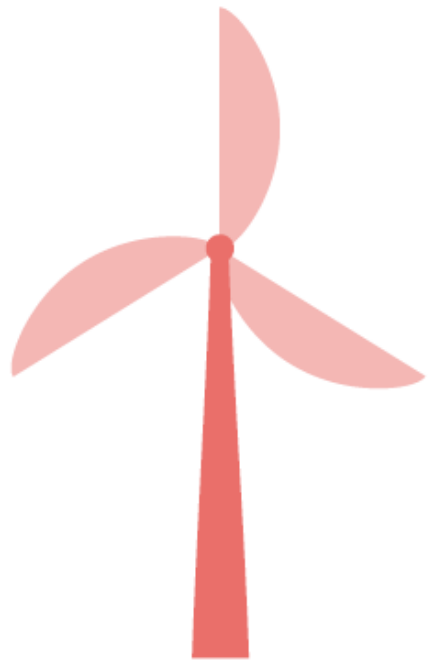
 **veco** the
victorian
energy
collaboration



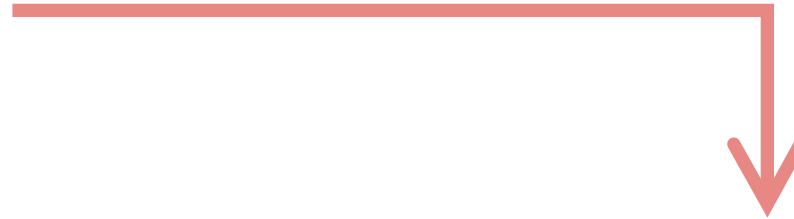
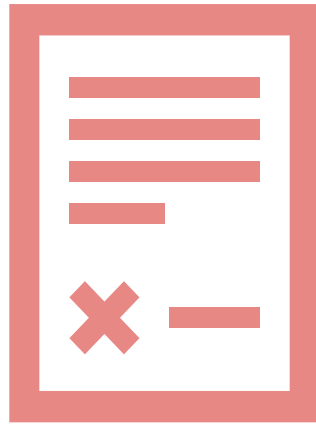
- VECO –was established to provide renewable electricity for all Vic Councils
- Initiated by the Victorian Greenhouse Alliances
- Inspired by MREP and SSROC
- Motivated by skyrocketing electricity prices
- Led by Darebin City Council, then Glen Eira, now Brimbank.
- Largest emissions reduction project in LG sector in Australia



About the project



Contract with
retailer



For Council assets
& facilities

100% Renewable
electricity from VIC



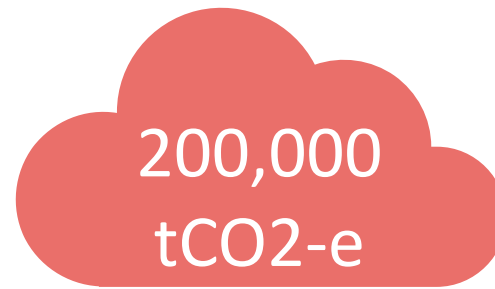
About the project



65% of VIC
COUNCILS



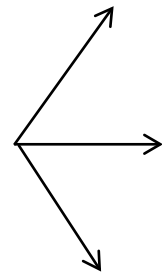
200+ GWh OF
RENEWABLE
ELECTRICITY



48,000
homes

Council involvement

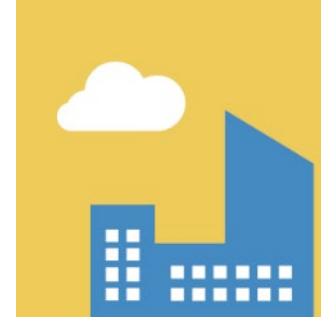
51
COUNCILS



18 METRO AND
INTERFACE

8 REGIONAL
CITIES

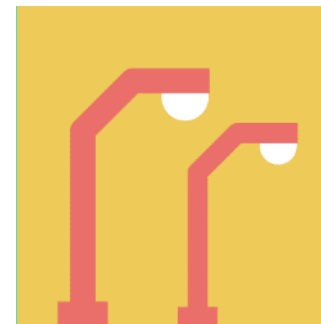
25 SHIRES




Large
Market



Small
Market



Street
Lighting

A photograph of a wind farm on a hillside at sunset. The sky is a gradient of orange, yellow, and pink. Several wind turbines are visible, with the largest one in the foreground on the left. The turbines are silhouetted against the bright sky. The background shows rolling hills and a valley with some buildings.

Agreements like VECO
support additional
renewable energy in the grid

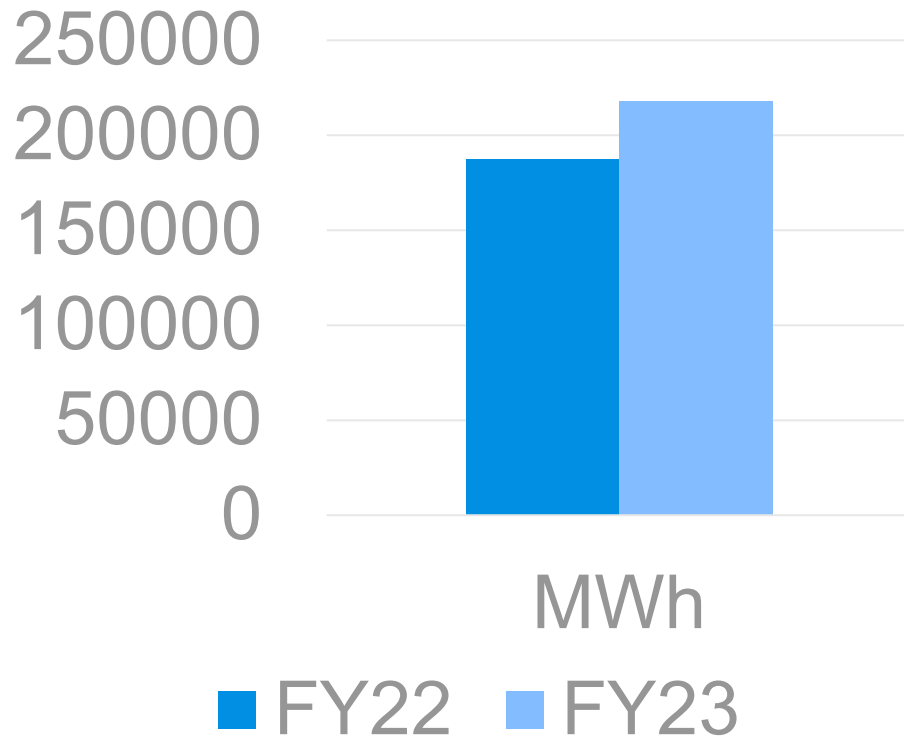
VECO Results



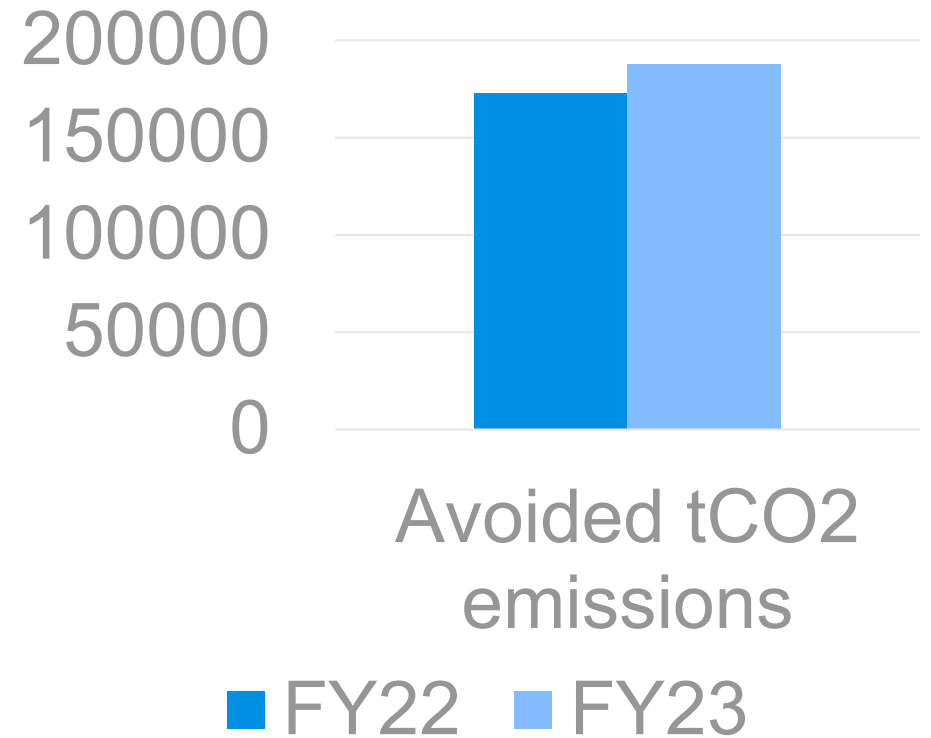
VECO results



VECO Energy Use



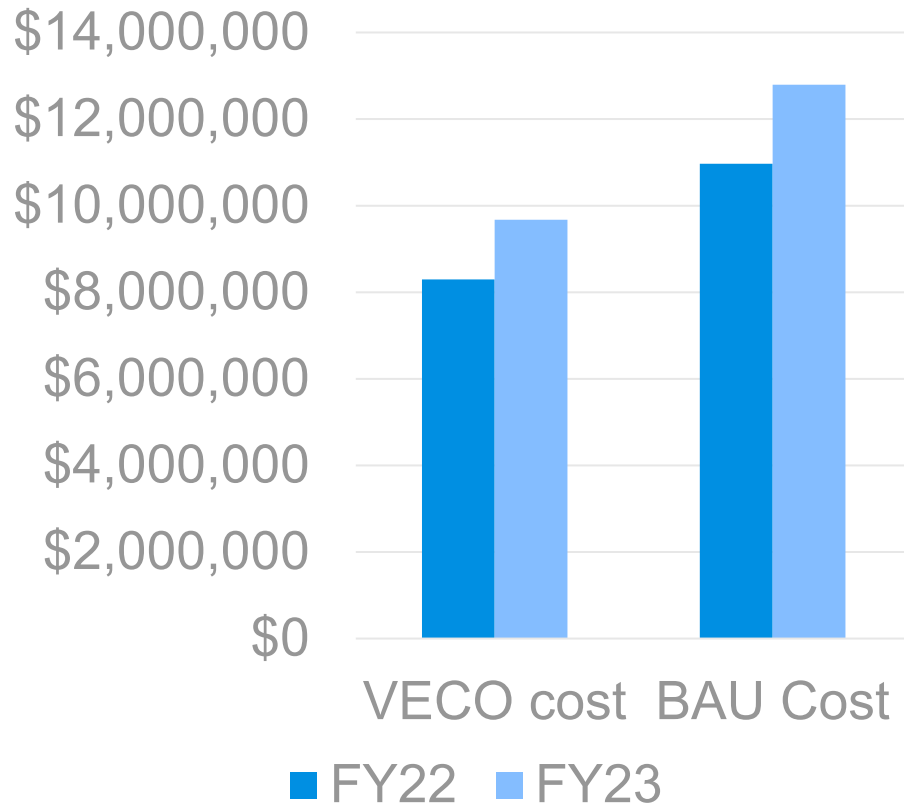
VECO Scope 2&3 Emissions Saving



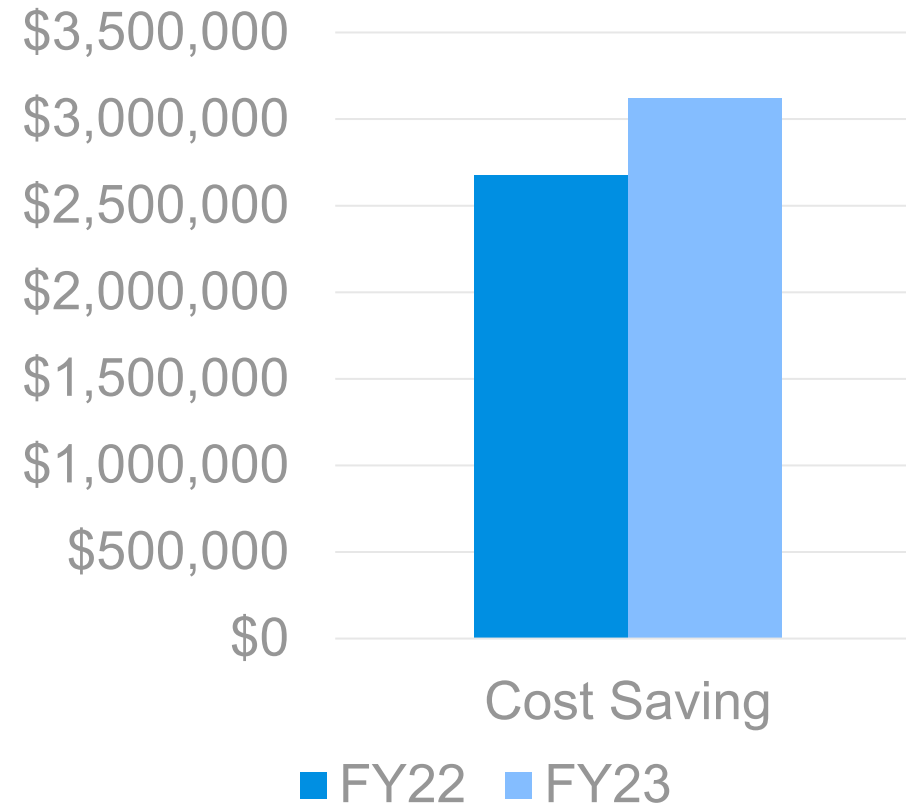
VECO Comparison against BAU



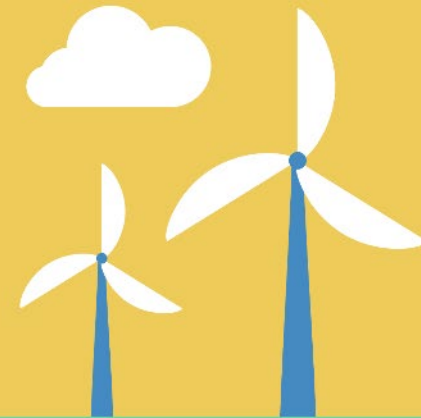
VECO compared to BAU contract



VECO compared to BAU contract



Ingredients
for success?



 **veco**



BROADER PARTNERSHIPS

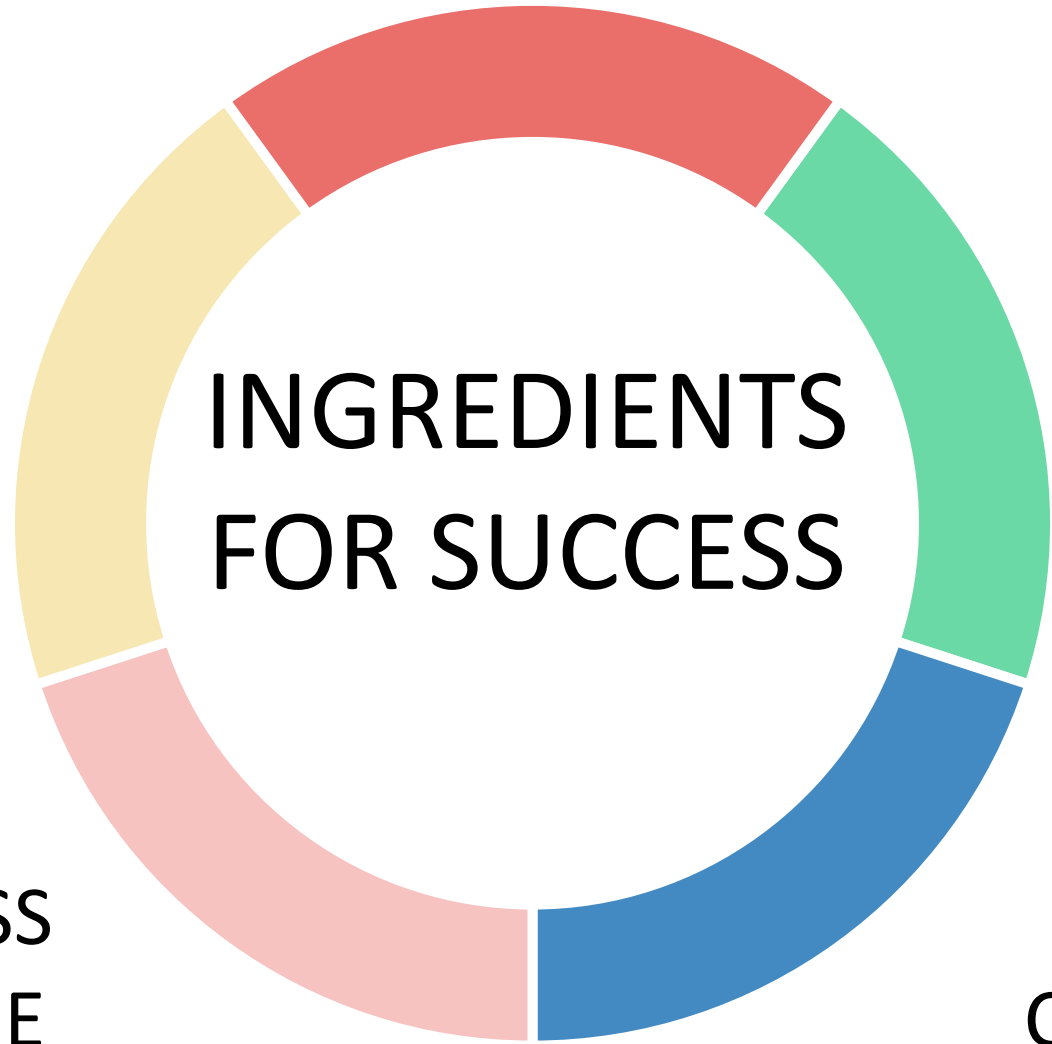
**GROUP
PERSPECTIVE**

TRUST

**INGREDIENTS
FOR SUCCESS**

**WILLINGNESS
FOR CHANGE**

**BUILD
CAPACITY**

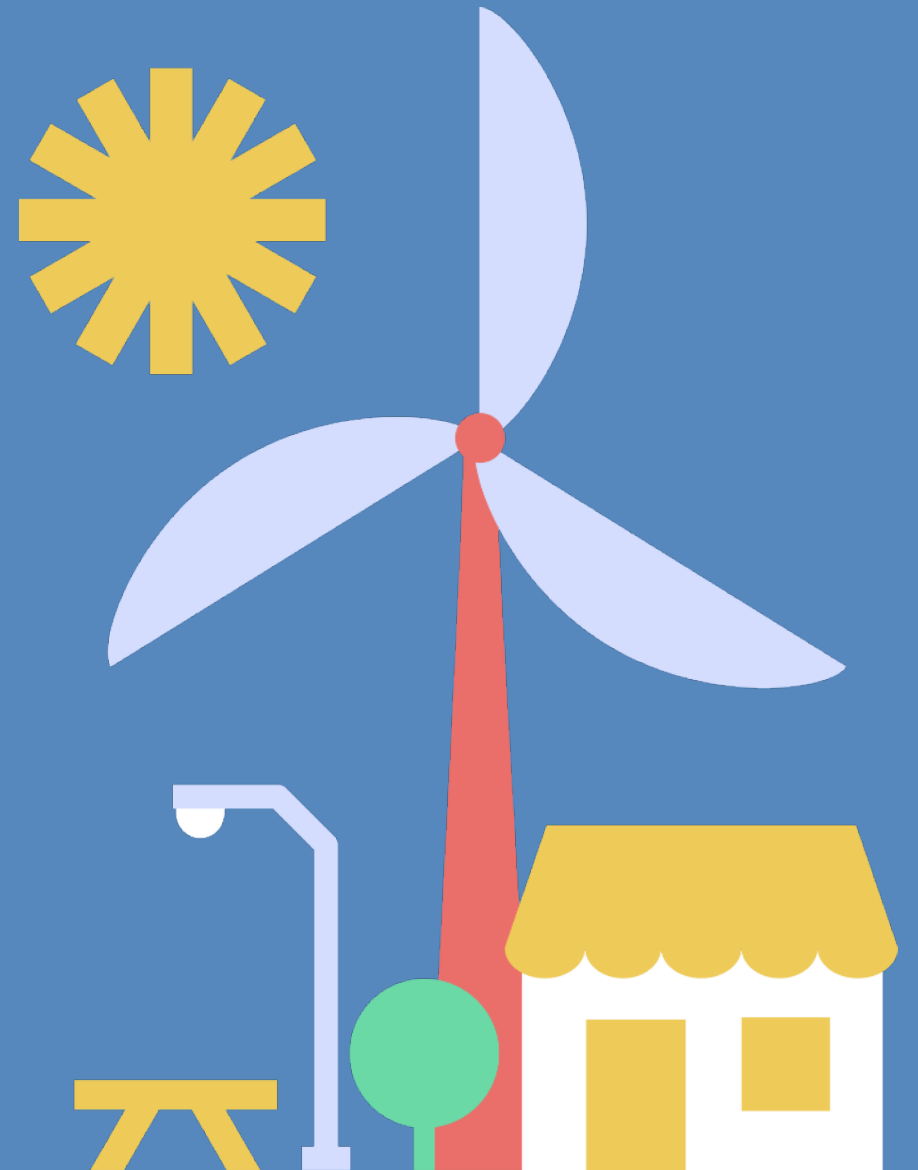




veco
the victorian
energy
collaboration



What's next for VECO ?





NORTHCOTE AQUATIC AND RECREATIONAL CENTRE (NARC)

Santiago Perrotto
Principal Climate Officer
19 April 2024



Acknowledgement of Country

I acknowledge the Wurundjeri Woi wurrung People who are the Traditional Owners of the Land. I recognise their continuing connection to Land, Water and Culture.

I pay my respects to Elders past, present and emerging.

*Artwork by Natasha Ellis-Corrigan, proud Jinibara/Bundjalung woman.
Aboriginal artist from Jinibara Designs.*





Caring for Country

Story telling



Keep an eye out for the small details

River creatures and birds in the splash pad, glass and walls.

Oyster inspired seats.

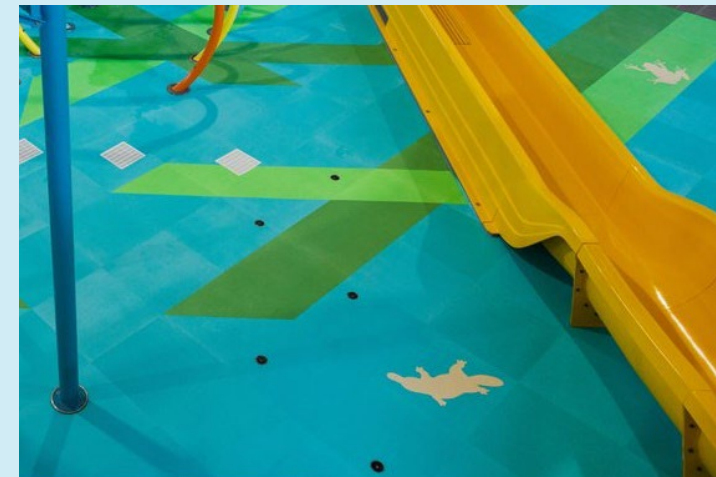
Ceremonial Pits

Billabongs in waterway plays



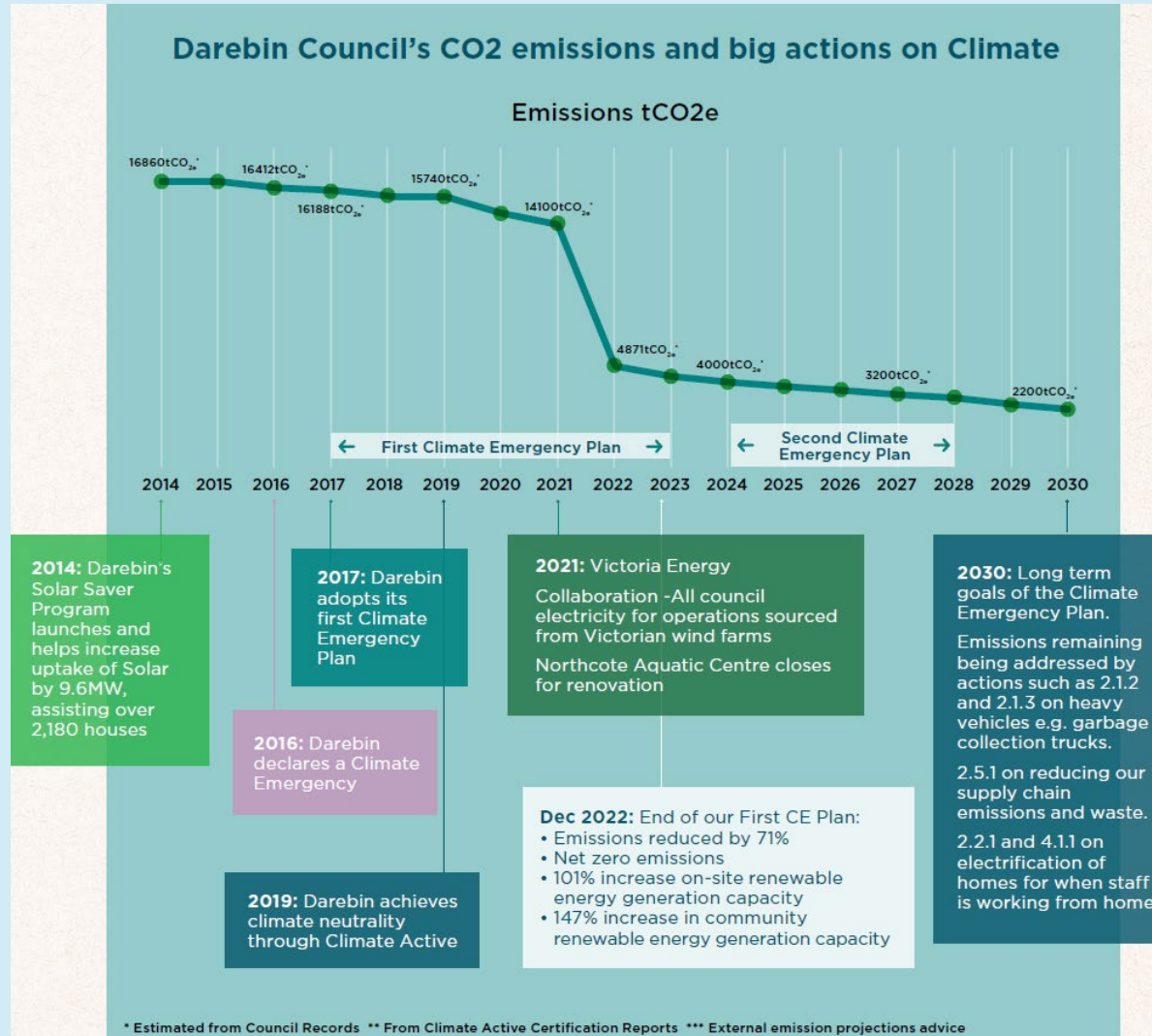
Photo by Kane Constructions Pty Ltd & Kane Jarrod Photography

Resilience





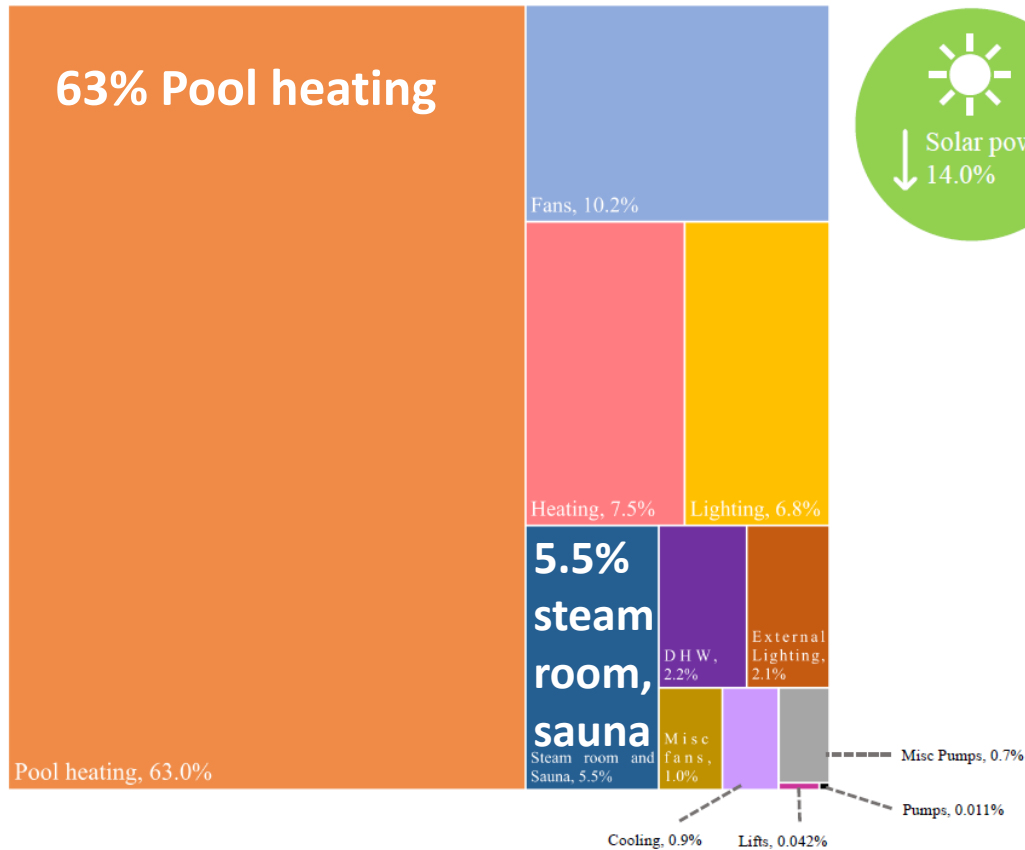
Towards zero emissions





Where to start?

Proposed Case - Energy Consumption Distribution



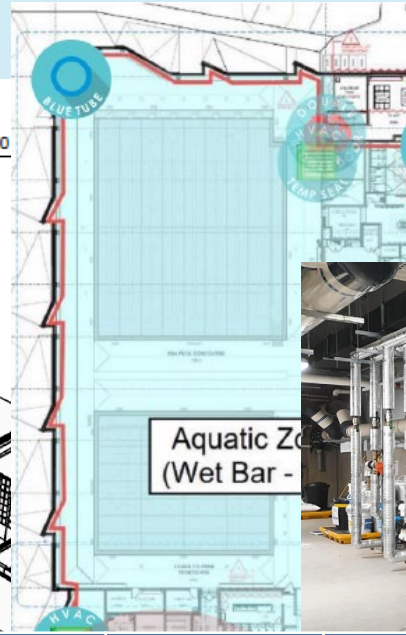
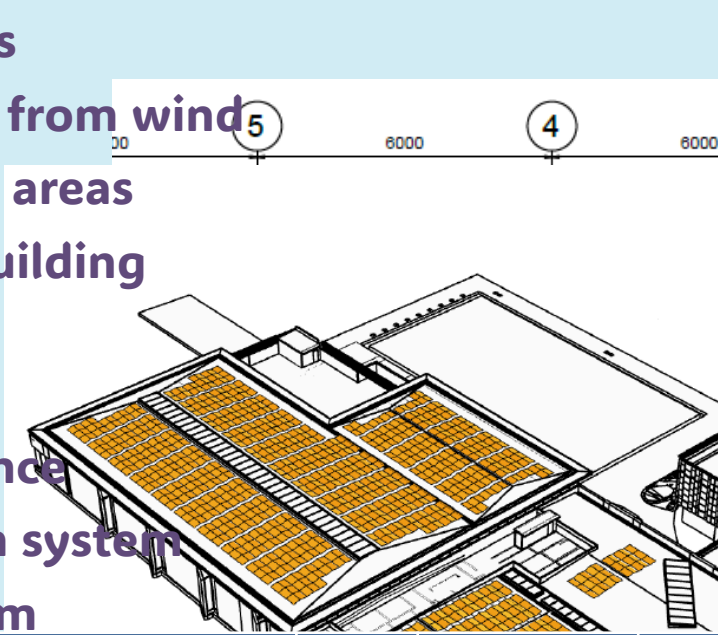
What about the pools?

Passive

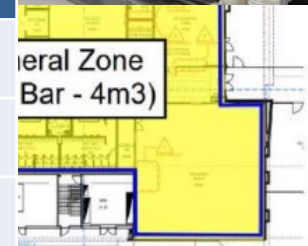
- Insulation pools and structure
- Pool covers
- Protection from wind
- Wet vs dry areas
- Air tight building

Active

- Open balance
- Ventilation system
- Heat system



Hot water plant	Qty	Refrigerant	GWP	Heat COP	Chilled water COP with heat recovery
4 Pipe Heat Pump	2	R454B	466	2.87	7.07
2 Pipe Heat Pump	3	R32	677	2.68	
DHW Heat Pump	3	CO2	1	3.44	



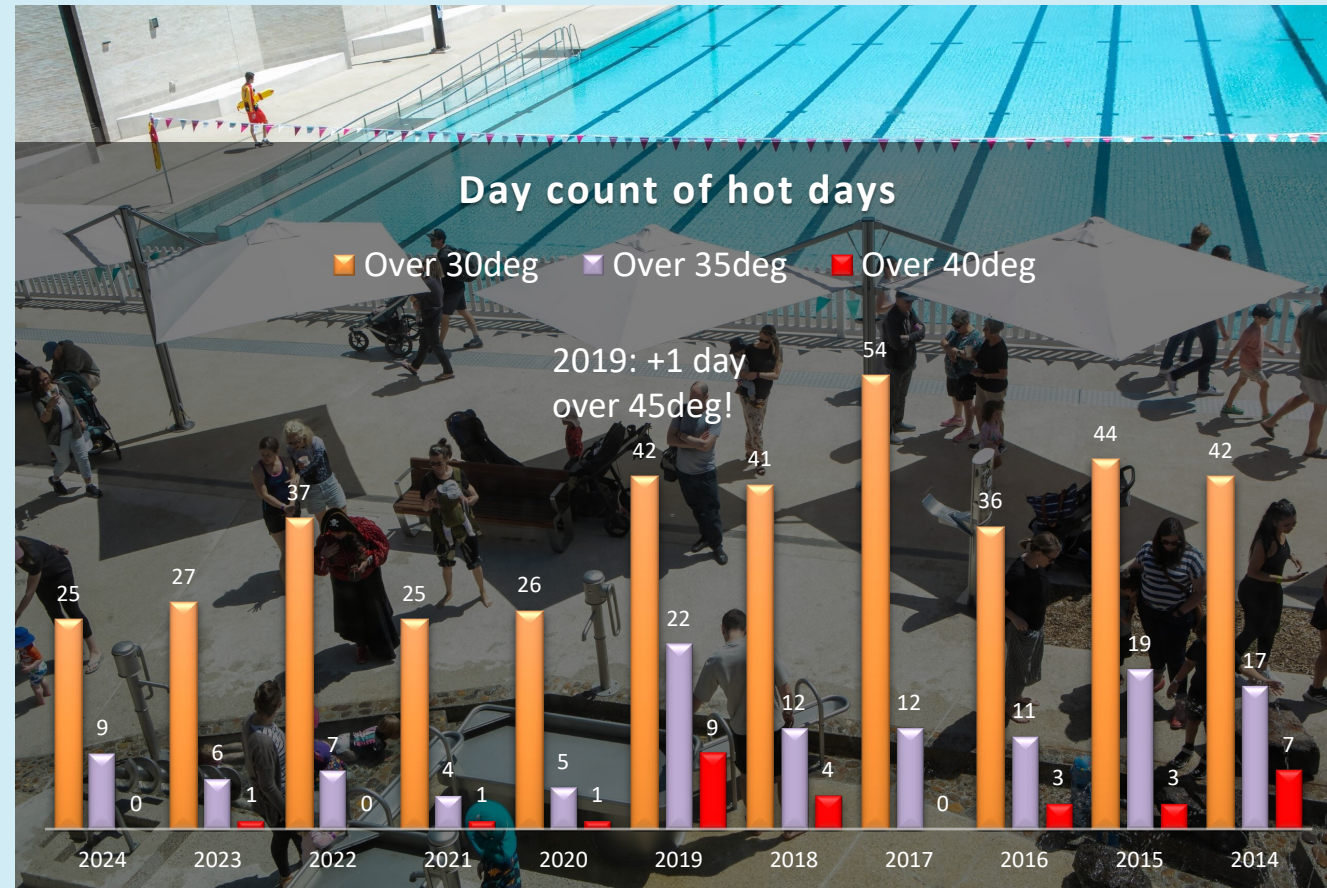


Community Resilience



Health benefits

Capacity to operate during black outs





Innovation and leadership



2,000+ aquatic centres in Australia

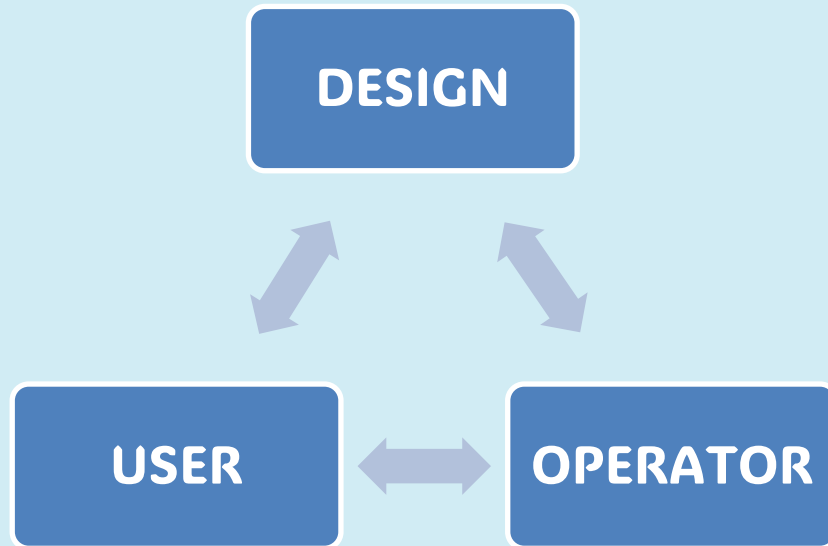


NARC

- Operations 300+ jobs
- Redevelopment 1,400+ jobs
- 8,200 Subscribers by March 2024
- + 1,900 learn to swim



Learnings



- Showers + pre-rinse
- Water fountains
- Technology
- Data
- Messaging
- Solar





Thank you!
Santiago.Perrotto@darebin.vic.gov.au

The role of local government and community in energy

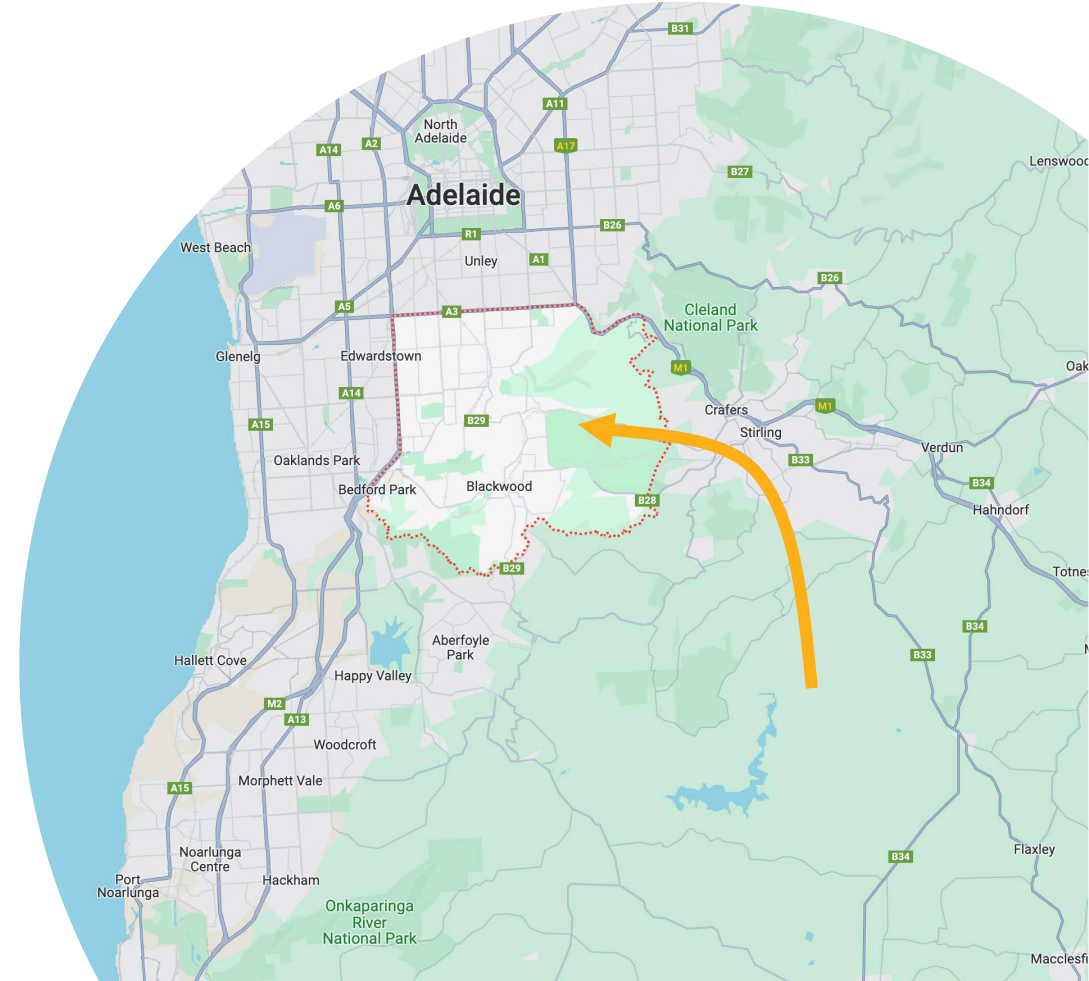
Climate Emergency Conference

Mayor Dr. Heather Holmes-Ross

19 April 2024

Where is Mitcham?

- 75 square km in area
- 30,000 rateable properties (86% residential)
- Population of approximately 70,000
- Relatively affluent and educated community



**There is a real role in
scaling renewables for
local government**

Vision:
A self-sustaining solar city



Barriers to achieving the vision

1. Cost
2. Trust
3. Waste



How did we do it

1. Non-prescriptive, outcome-based tender
2. Due diligence
3. Design
4. White Label partner



The program

1. Community Bulk Buy's
2. Council Green Energy Plan
3. Charge Local
4. Virtual Power Plant
5. Community Retail Plan

1. Community Bulk Buy's

Affordable solar and battery through a bulk buy offer for residents.



2. Council Green Energy Plan

*Solar and Batteries
across Council's
buildings and assets.*



3. Charge Local

*Public EV Charging
Network with a role
for local government*



4. Virtual Power Plant

*Connecting with
the grid to generate
local benefit*



5. Community Retail Plan

*Access to cheaper
green energy for those
who usually miss out*





Results (so far)

901

residential sign ups
through Bulk Buys

\$228

Average bill saving
per quarter for
participating residents

\$2 mil +

community savings
on electricity bill
(September 2023)

≈1400_{tCO₂e}

annual community
carbon reduction
(September 2023)

**Savings and
revenue for the
City of Mitcham**

**What have we
learned about scale?**



Local scale

- Trust in local government is critical
- Role of Mayor
- Community spirit and ‘local’



Scale across Councils

- Presentations (30+)
- Tender pack including due diligence
- Nominate for awards
- Work with experts



Lessons in scale

1.

**Identify risks and
work out how to
mitigate them**

2.

**Use reputable
experts**

3.

Don't sell, just tell

4.

**Find one (good)
local government
partner to start with**

5.

**Share the nitty gritty
with others**

6.

**Adapt for local
context**

**There is a real role in
scaling renewables for
local government**

 **Learn more**



**Download our
Program Overview
and Council Toolkit**

Climate Emergency Conference 2024

LATUS
LOGISTICS RISK SPECIALISTS
ADVICE EDUCATION COMPLIANCE

Electric Heavy Vehicles

-

A New Concept

LATUS
LOGISTICS RISK SPECIALISTS
ADVICE EDUCATION COMPLIANCE



- 1900's Walker Milk Truck
- 1919 DeMoll delivery truck
- 1950's Milk Float

Types of Heavy EV's

- BEV – Battery Electric Vehicle

PRO's

- Hi efficiency
- Reduced emissions
- Lower maintenance
- Durable operationally

CON's

- Travel range
- Charging /"Fuelling" time
- Skilled workforce (*HV Techs*)
- More expensive
- Hi Payload/Towing reduction
- Battery Life span
- Low resale value
- Charging locations
- 12v to 48v Charging

Types of Heavy EV's

- FCEV – Fuel Cell Electric Vehicle

PRO's

- Hi efficiency
- Reduced emissions
- Lower maintenance
- Durable operationally
- Comparable payload/towing
- Greater travel range
- Higher resale value

CON's

- More expensive
- Refuelling stations
- Fuel H2
- Skilled workforce (*HV Techs*)
- 12v to 48v Charging

No Brainer !

- Simple selection
 - Cheapest vehicle
 - Longest range
- Example #1:
 - Glen Eira City Council – 14.5kms one end to the other
 - Outbound + Inbound = 29kms per day
 - Selected truck 300km range
 - Therefore, charge every 10 days
 - BEV ✓ / ✗
 - FCEV ✓ / ✗
 - ICE ✓ / ✗

No Brainer !

- Example #2:
 - Diamantina Shire Council – 413kms one end to the other
 - Outbound+ Inbound = 816kms per day
 - Selected truck 300km range
 - Therefore, charge 3 times per day
 - BEV ✓/ ✗
 - FCEV ✓/ ✗
 - ICE ✓/ ✗

**IS IT REALLY ALL
ABOUT DISTANCE
TRAVELLED?**

Council/Utilities Style usage

- Mobile workshop
- Mobile Toolbox
- Mobile office
- Personnel carrier
- Traffic management
- Hot/cold crib room
- Etc.

Truck NOT just a truck!
**Ancillary use needs to be account
for!**

SELECTING THE RIGHT FLEET

Who has one of these?



- How many of the 15 tools/blades have you actually used?

Re-think your fleet!

- What do you really need?
- What is a “nice to have”?
- What is a legacy item?
- What can be done in a different way?

- Examples:
 - *Jack hammer*
 - *Tail lift*
 - *Small crane*
 - *Pressure washer*

Take Aways

- Review every ICE vehicle you consider changing.
- Evaluate & prioritise usage of all items
- Determine what is actually needed
- Determine what can be done in another way
- Spec the new EV on the following:
 - Formula of range and hours
 - Carrying/Towing capacity
 - Recharging/Refueling options
 - Availability of servicing

Summary

- Electric Heavy Vehicles are a growing reality
- Costs will come down
- Charging and access will improve
- Range will increase

- **HOWEVER!**
- Not there yet
- Need continued “push” for Govt agencies to keep focus on EV’s and make it happen

QUESTIONS

Mike Wood
1300 008 386

www.latus.edu.au
mike@latus.edu.au

Logistics Risk Specialists

Melbourne • Perth • Brisbane • Kuala Lumpur • Johor Bahru

LATUS
LOGISTICS RISK SPECIALISTS
ADVICE EDUCATION COMPLIANCE



QUESTIONS AND ANSWERS

Go to: **slido.com**

Enter event code: **9445716**



**Please move
immediately to your
next break-out room –
the next session will
start at 2:20PM.**





Not sure where to go?

Check the program:



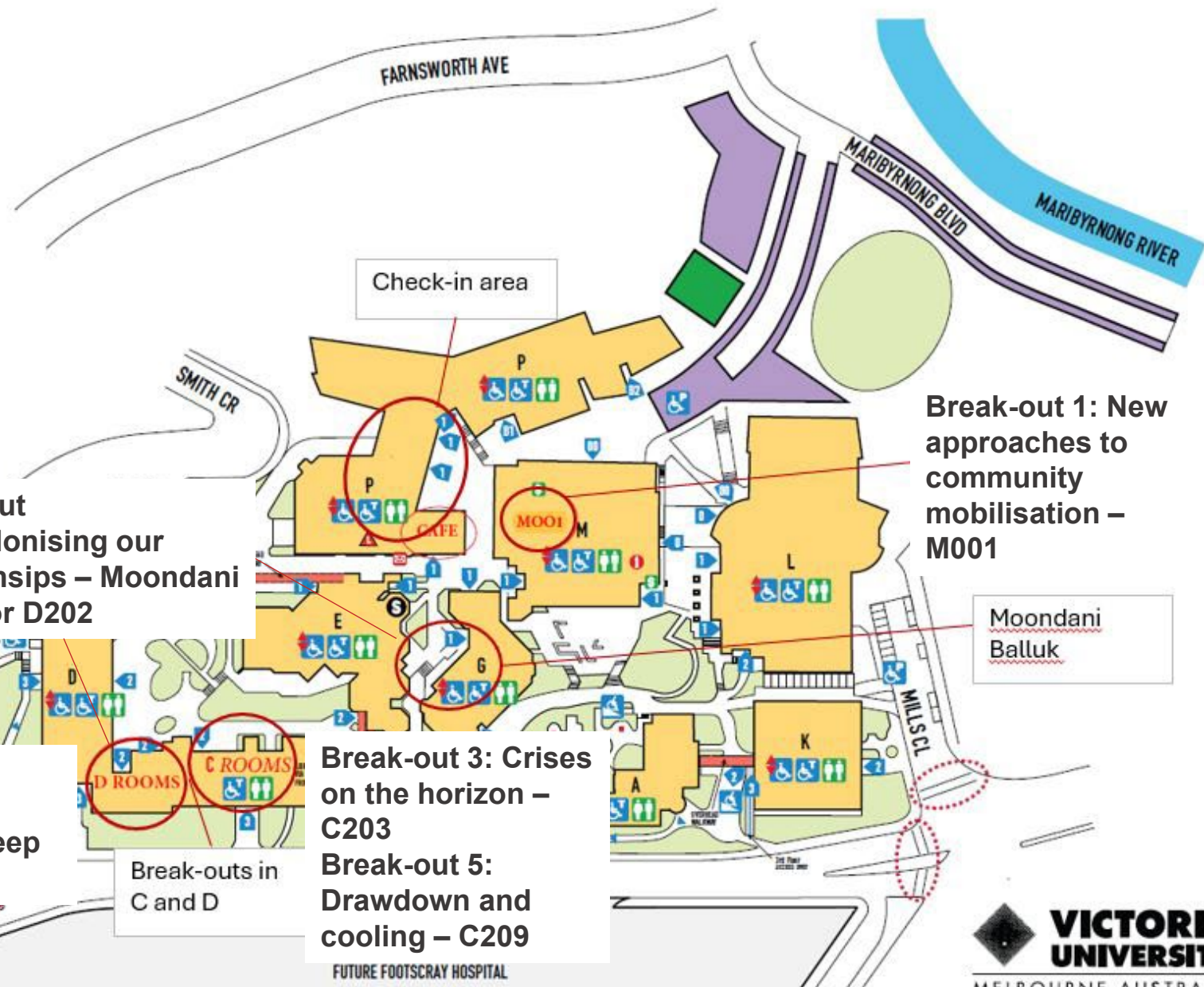


FOOTSCRAY PARK CAMPUS ACCESS AND MOBILITY MAP



LEGEND

- Accessible Parking
- Accessible Toilet
- Accessible Lift
- Steep Gradient
- Toilets
- Public Telephone - SMS
- Bus Stop
- ATM
- Student Service Centre
- Car Parks
- University Buildings
- Overhead Walkways
- Tennis Courts
- Bar-B-Q
- Accessible Building Entry
- Library
- Traffic Sign
- Security



Updates:



Break-out 4: Decolonising our partnerships – Moondani Balluk or D202

Break-out 1: New approaches to community mobilisation – M001

Break-out 2: Council mobilisation deep dive – D200

Break-out 3: Crises on the horizon – C203

Break-out 5: Drawdown and cooling – C209

Break-outs in C and D

Moondani Balluk