



WELCOME

CLIMATE EMERGENCY CONFERENCE 2024

*Councils and communities
reclaiming the climate emergency*



Climate
Emergency
Australia



Maribyrnong
CITY COUNCIL

Proudly supported by



**VICTORIA
UNIVERSITY**



ACKNOWLEDGEMENT OF COUNTRY

Everywhere on this continent, we are all on unceded Aboriginal land. We acknowledge that we are meeting today on the land of the Wurundjeri Woi Wurrung.

We thank and acknowledge the elders of all First Nations for looking after Country since the Dreamtime.

We will do all we can to look after it too, and to restore a safe climate for current and future generations of all species.



Break-out Block 1

Stepping up your climate emergency response



Climate
Emergency
Australia



Proudly supported by





Speakers:

- Sue Wilkinson, CEO, and Sam Green, Yarra City Council
- Mara Baviera and Victoria Hart, Merri-Bek City Council
- Justin Walsh, Macedon Ranges Shire Council



Facilitator:

- Victoria Hart, Merri-Bek City Council



QUESTIONS AND ANSWERS

Go to: **slido.com**

Enter event code: **9445716**



Take
Climate
Action



A whole of organisation climate emergency response



Why does a whole of organisation climate emergency response matter?



- * Our community wants and expects a bold and ambitious climate emergency response
- * Council has a responsibility to respond to the climate emergency (LG Act 2020)

Every job is a climate job



- * The science tells us
- * Using our privilege, position and intellect for good
- * Council's 5 strategic priorities/KPIs/metrics

Image credit: <https://workonclimate.org/2022/11/08/yes-you-can-take-climate-action-without-leaving-your-regular-job-heres-how/>

Our new draft Climate Emergency Plan



- * Workshops with Council's executive team, SLT, all staff
- * Not starting from scratch
- * Team roles and key team actions

What's next?

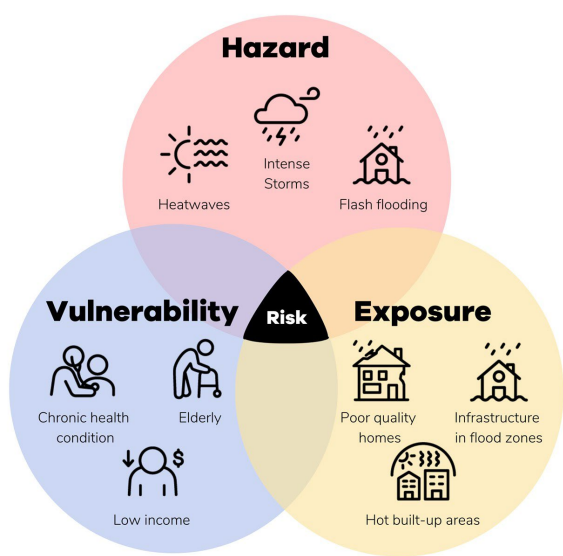


- * Embedding a climate emergency response through the mechanics of Council
- * Supporting teams/managers (they are not all the same!)

Let's learn from each other!



climateemergency@yarracity.vic.gov.au



Be safe during
extreme weather



Reduce health impacts



Protect the vulnerable



Prepare our homes and
infrastructure



Improve communications

Merri-bek City Council

Addressing and integrating climate risk: a whole of Council approach

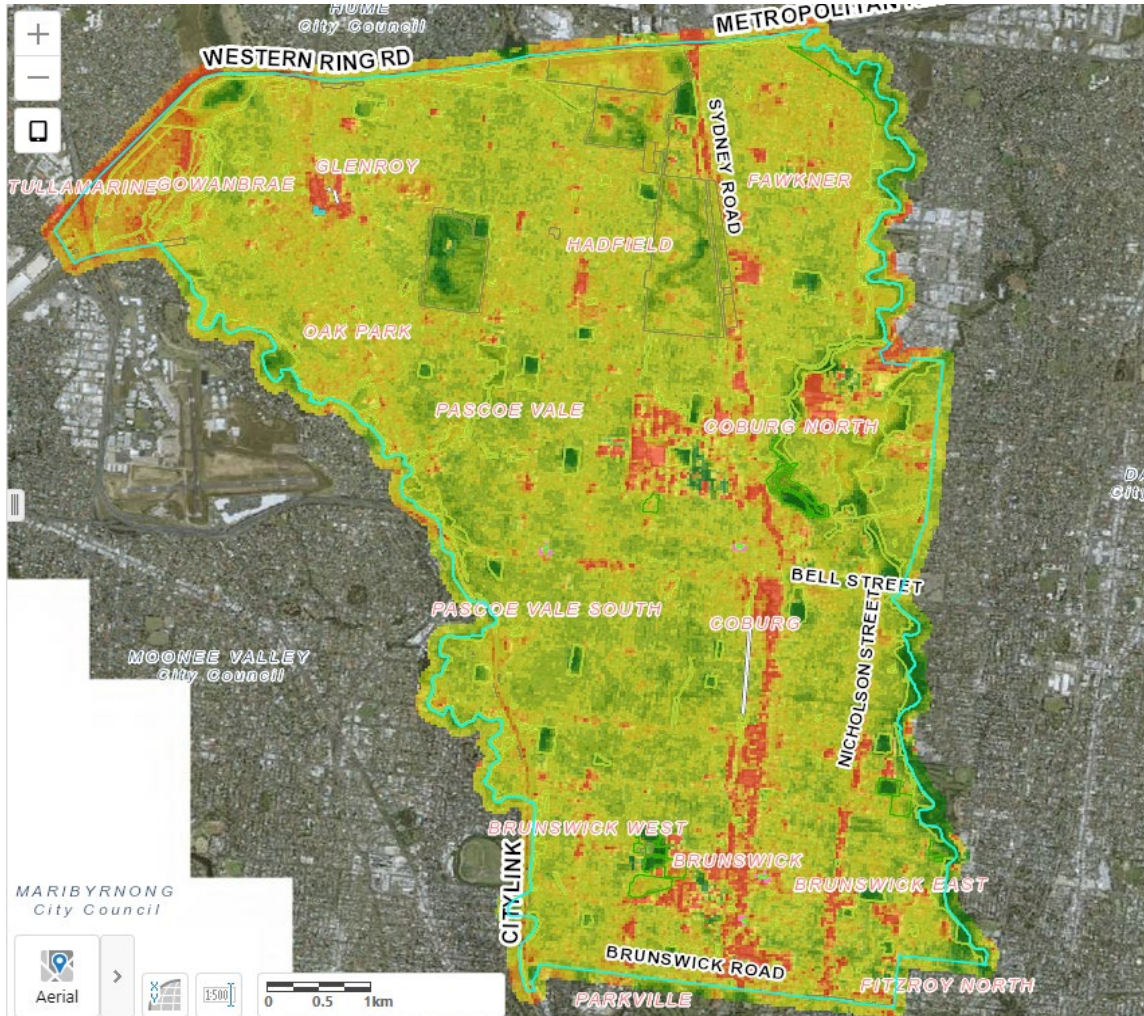
19 April 2023

Victoria University, Footscray

About Merri-bek



Merri-bek
City Council



Understanding the Target Audience

9,500+

**Households
without
internet
access**



51.3%

Female residents



Usually not the primary energy
decision-maker



**North-
west
ward**

**Most
Vulnerable to
heat stress**

**Need more
insights on
residents'
energy
habits**



Most spoken Merri-bek languages

- Italian
- Greek
- Turkish
- Urdu
- Nepali
- Mandarin

Climate Action in Merri-bek



Merri-bek
City Council

Celebrating 10 years as a Carbon Neutral Council



This year Merri-bek celebrates 10 years of carbon neutrality under the Federal Government's Climate Active program. As one of the first councils in Australia to become certified carbon neutral, we are proud of our investment in efficient and clean energy.



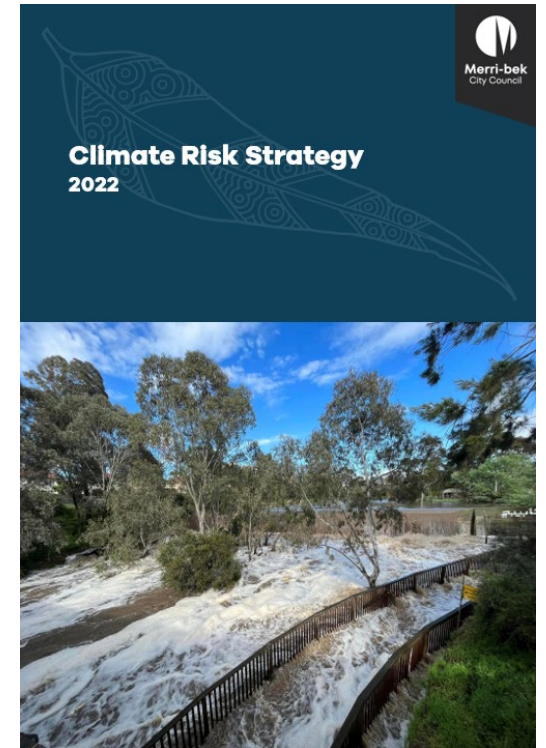
Background of climate risk work in Merri-bek



Merri-bek
City Council

Milestones:

- Audit findings in 2020
- Establishment of Climate Resilience Integration Board
- Climate Risk Strategy in 2022
- Foundational Action Plan in 2023
- Completed key projects
 - Service assessments
 - Building vulnerability assessment
 - Engaging with service providers on extreme heat



Change management approach

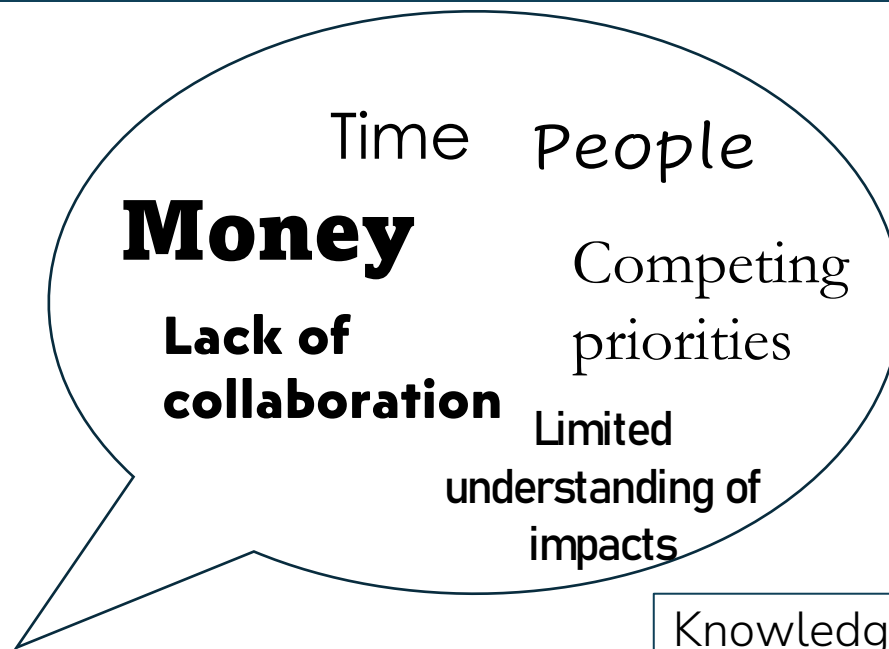


Conduct barrier analysis

Set internal engagement objectives

Have an internal engagement plan

Have an uptake management plan



- Knowledge
- Capability and organisational culture
- Accountability
- Processes and embedded ways of doing things
- Broader policy environment and disciplines

Addressing knowledge barriers through learning by doing



Merri-bek
City Council

Strategy and Action Planning

Climate vulnerability assessment projects

Services

Buildings

Place-based Initiatives

Ballerrt Mooroop

Central Coburg Revitalisation

Brunswick Early Years Hub

Urban Design Framework for Upfield Corridor

External working groups and networks



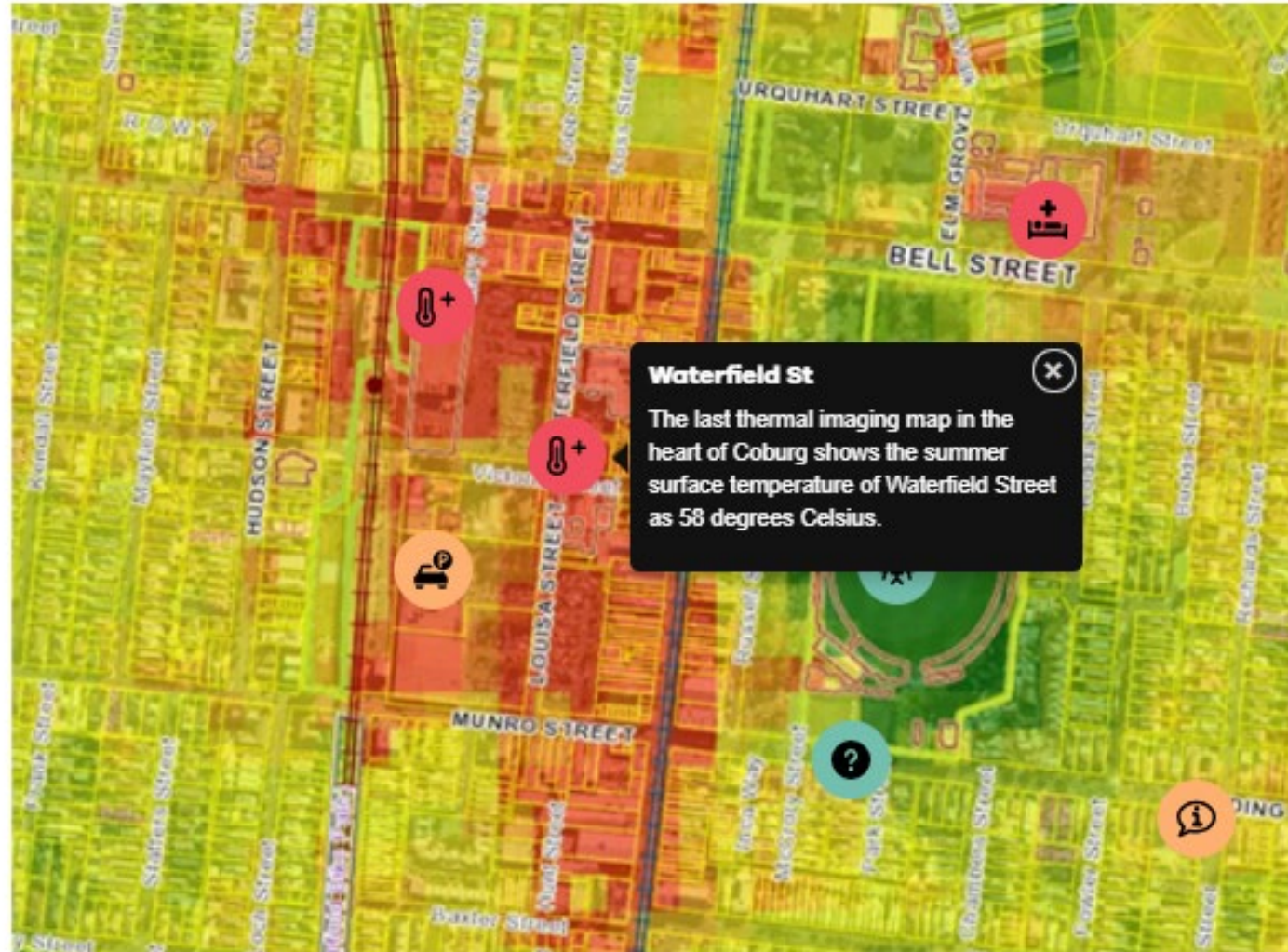
The Coburg Conversation

Join The Coburg Conversation and share your ideas on how we can make the heart of Coburg welcoming for everyone.



Merri-bek
City Council

[The Coburg Conversation | Conversations Merri-bek](#)



Building capability through targeted training



Merri-bek
City Council

The Adaptation Game (expansion pack)

Change management - integration with leadership training initiatives

Training on climate resilient asset management

Webinars on climate-related financial disclosures



Building accountability through governance and reporting



Climate Resilience Integration Board

Monitoring and evaluation framework and quarterly reporting

Progress reporting integrated with corporate planning

Number	Percentage	Status	Definition	Traffic Light
3	8%	Achieved	Completed, achieved	
24	68%	In Progress	On track	
3	8%	Off Track	Behind Target	
0	0%	Critical	Action is significantly delayed	
3	8%	Action Not Yet Started	Action not yet required to start (e.g. for FY 24/25)	
3	8%	No report	No report available	

Effective centralised processes as enabler of change



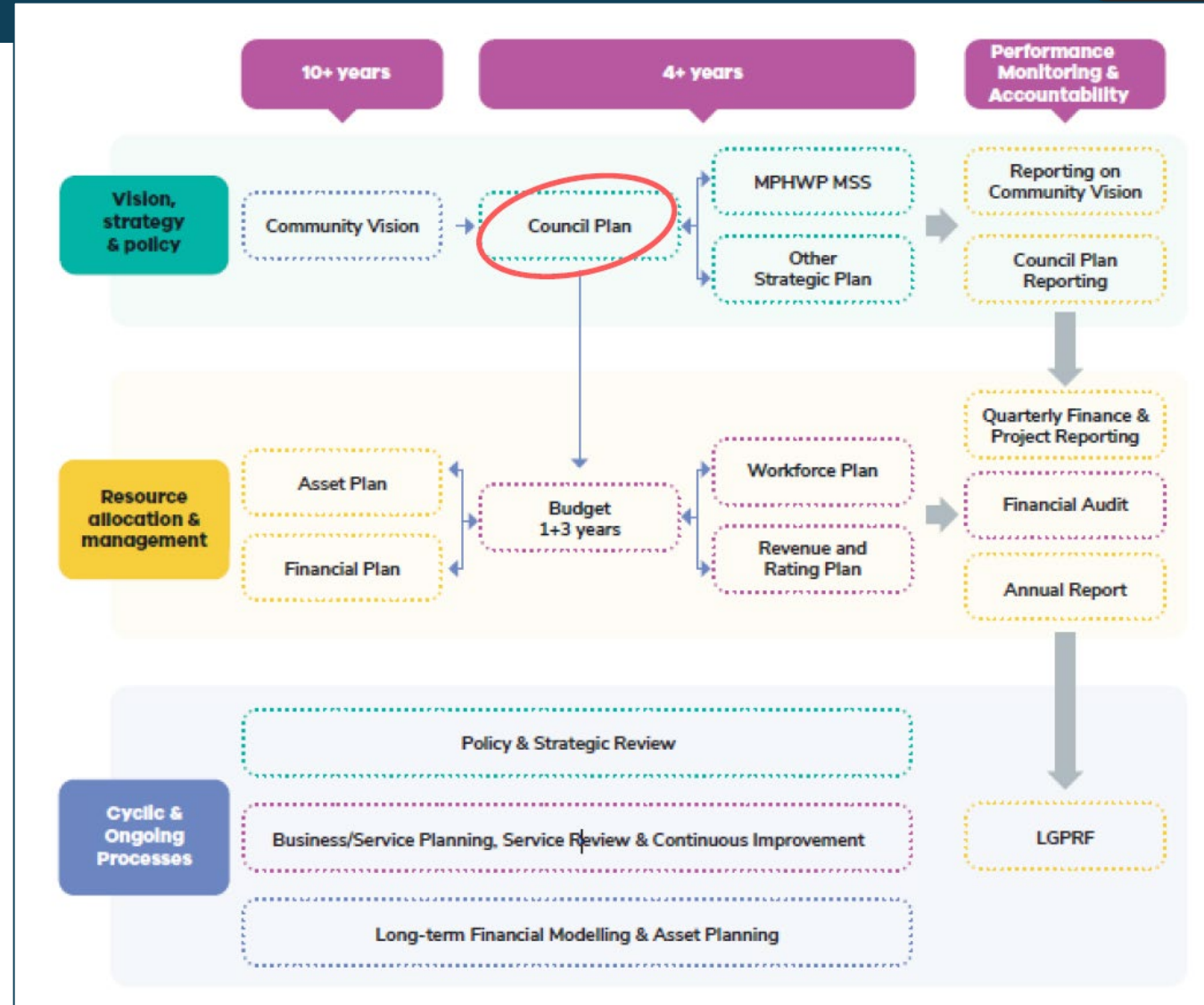
Integrated Planning

Service and operational planning

Business cases and budget planning

Capital works planning processes

Monitoring and reporting outcomes



Constraints in the Policy Environment

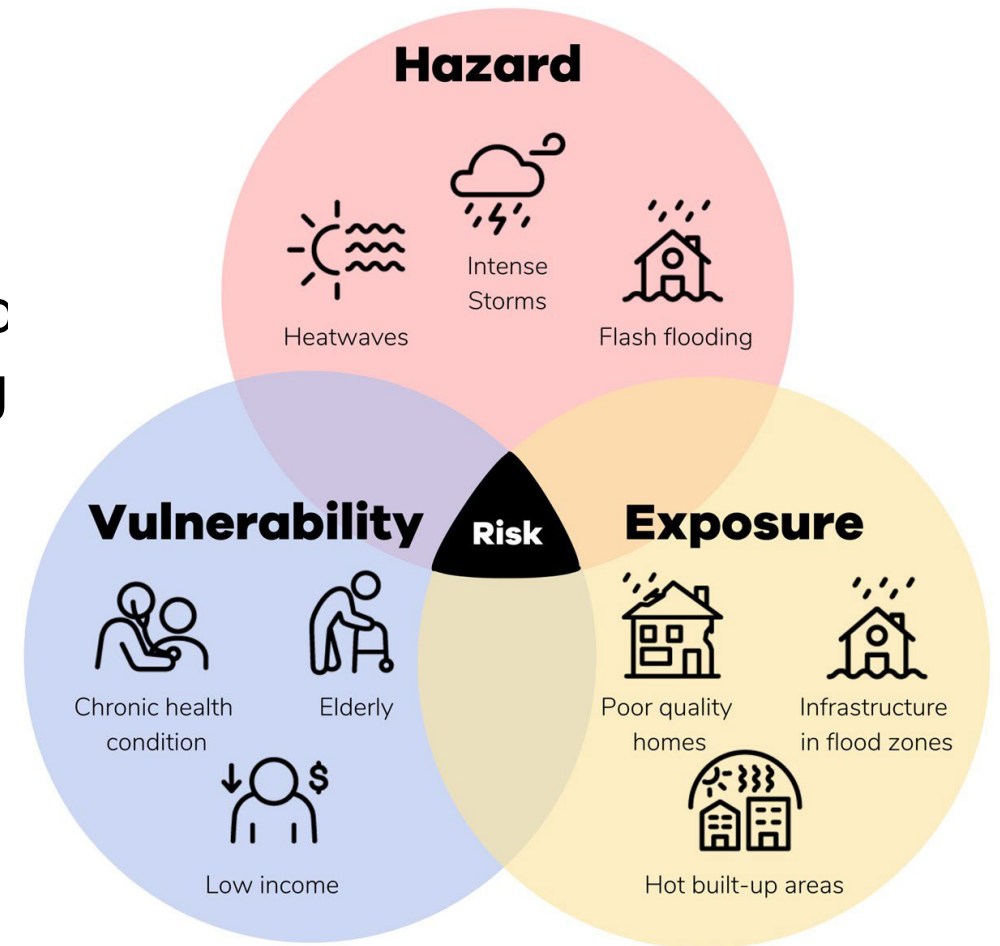


Need for local action but lack of enabling environment in other levels of Government for system change

Planning and processes that are short term, based on past events, and based on maintaining existing service levels

Moving beyond response and recovery to preparedness and risk reduction

Thinking together requires time, trust, deep engagement, and breaking down of silos





Merri-bek
City Council

Thank you

Sustainability and Climate Branch

Victoria Hart, Manager

vhart@merri-bek.vic.gov.au

Mara Baviera, Climate Resilience Integration Lead

mbaviera@merri-bek.vic.gov.au



Climate Emergency Plan 2023-30

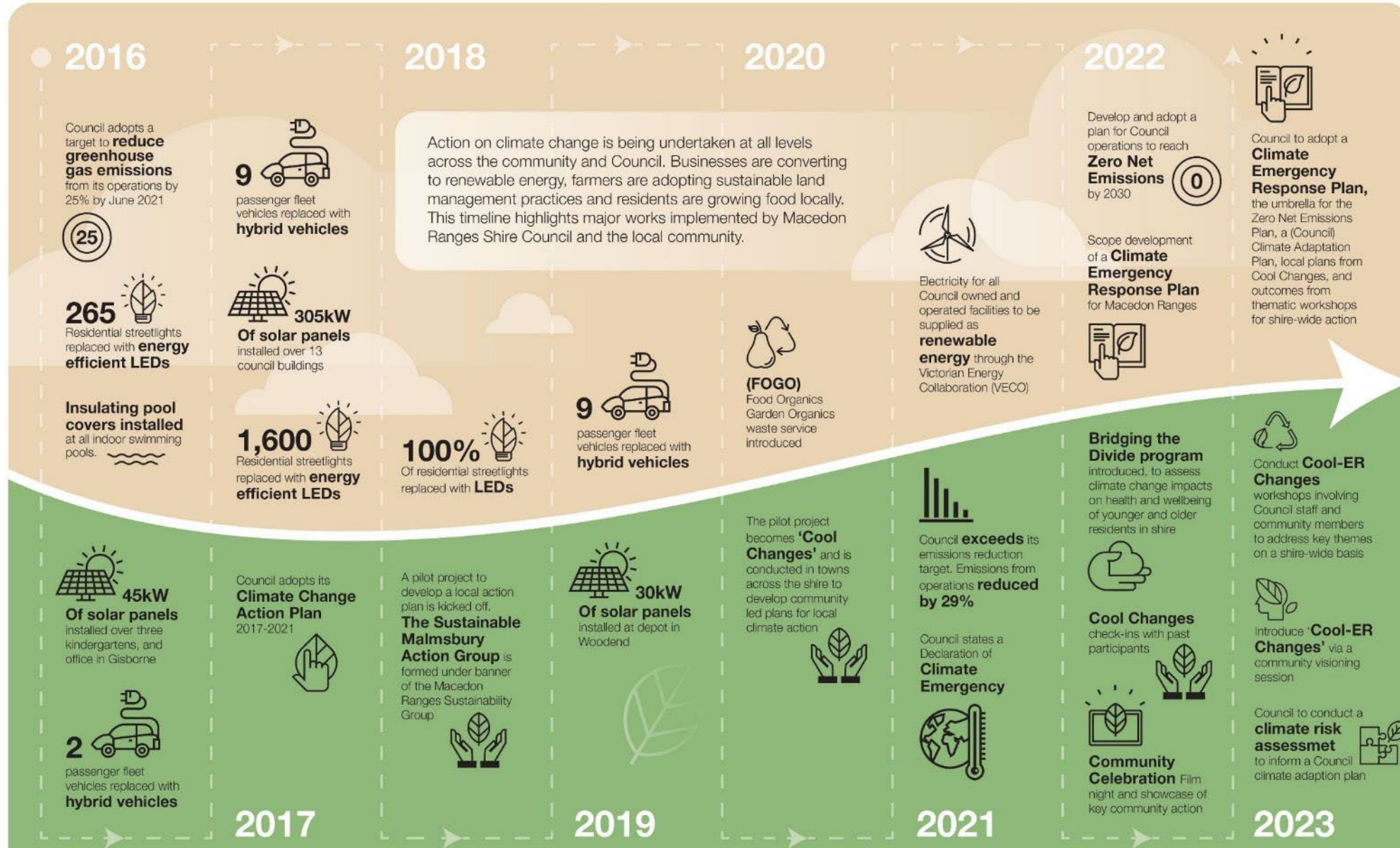
Collaborative climate planning

Image *Camel's Hump, Mount Macedon*



Macedon Ranges
Shire Council

Our collective journey...



2016

Council adopts a target to **reduce greenhouse gas emissions** from its operations by 25% by June 2021



265 Residential streetlights replaced with **energy efficient LEDs**

Insulating pool covers installed at all indoor swimming pools.

45kW Of solar panels installed over three kindergartens, and office in Gisborne

2 passenger fleet vehicles replaced with **hybrid vehicles**

9 passenger fleet vehicles replaced with **hybrid vehicles**

305kW Of solar panels installed over 13 council buildings

1,600 Residential streetlights replaced with **energy efficient LEDs**

Council adopts its **Climate Change Action Plan 2017-2021**

2018

Action on climate change is being undertaken at all levels across the community and Council. Businesses are converting to renewable energy, farmers are adopting sustainable land management practices and residents are growing food locally. This timeline highlights major works implemented by Macedon Ranges Shire Council and the local community.

100% Of residential streetlights replaced with **LEDs**

A pilot project to develop a local action plan is kicked off. **The Sustainable Malmesbury Action Group** is formed under banner of the Macedon Ranges Sustainability Group

2019

9 passenger fleet vehicles replaced with **hybrid vehicles**

30kW Of solar panels installed at depot in Woodend

2020

Electricity for all Council owned and operated facilities to be supplied as **renewable energy** through the Victorian Energy Collaboration (VECO)

(FOGO) Food Organics Garden Organics waste service introduced

The pilot project becomes **'Cool Changes'** and is conducted in towns across the shire to develop community led plans for local climate action

2021

Council **exceeds** its emissions reduction target. Emissions from operations **reduced by 29%**

Council states a Declaration of **Climate Emergency**

2022

Develop and adopt a plan for Council operations to reach **Zero Net Emissions** by 2030

Scope development of a **Climate Emergency Response Plan** for Macedon Ranges

Bridging the Divide program introduced, to assess climate change impacts on health and wellbeing of younger and older residents in shire

Cool Changes check-ins with past participants

Community Celebration Film night and showcase of key community action

Council to adopt a **Climate Emergency Response Plan**, the umbrella for the Zero Net Emissions Plan, a (Council) Climate Adaptation Plan, local plans from Cool Changes, and outcomes from thematic workshops for shire-wide action

Conduct **Cool-ER Changes** workshops involving Council staff and community members to address key themes on a shire-wide basis

Introduce **'Cool-ER Changes'** via a community visioning session

Council to conduct a **climate risk assessmet** to inform a Council climate adaption plan

2023

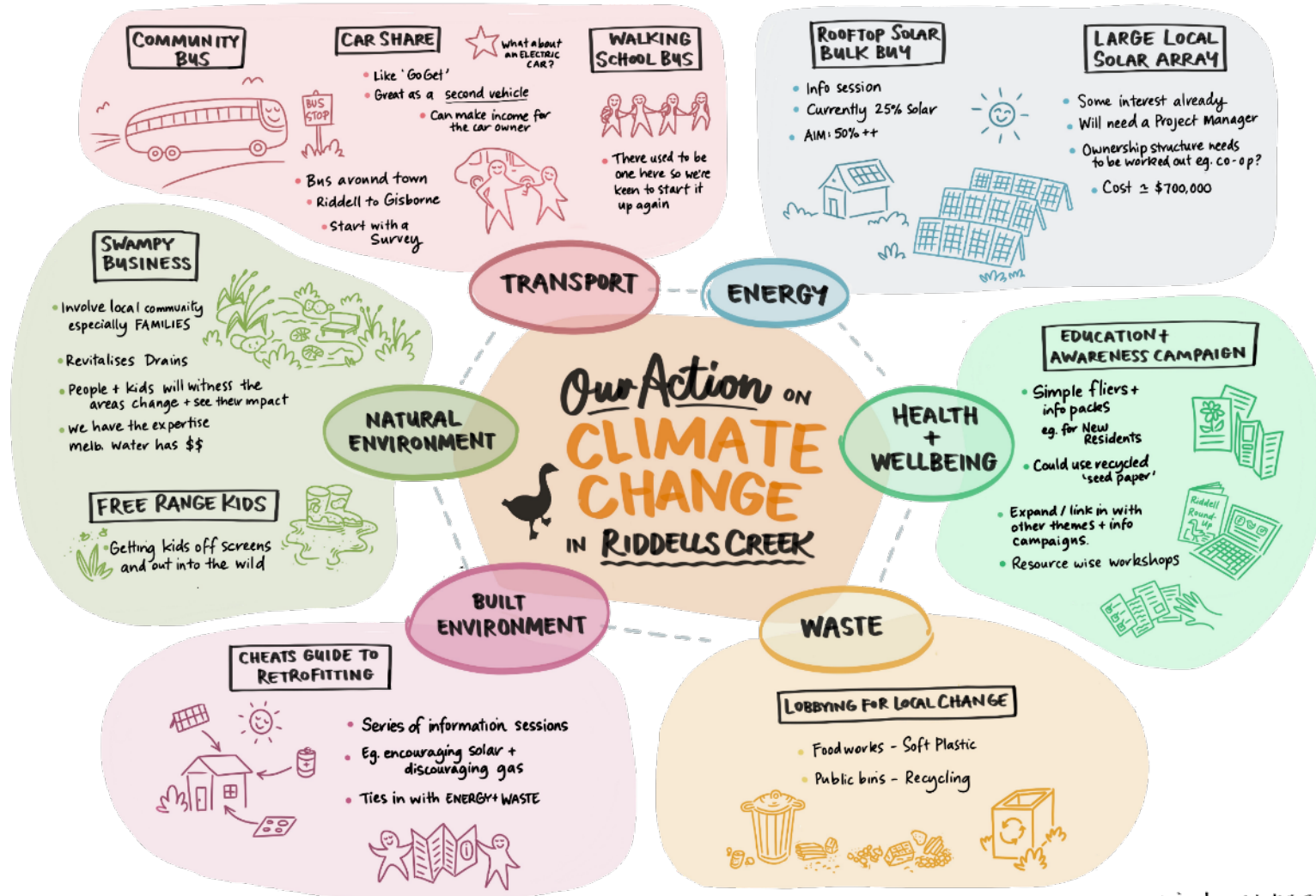
Climate Change Actions



Cool Changes

Developing Community Climate Action Plans

REDUCE EMISSIONS + STRENGTHEN COMMUNITY CONNECTIONS + SUPPORT LOCAL ECONOMY

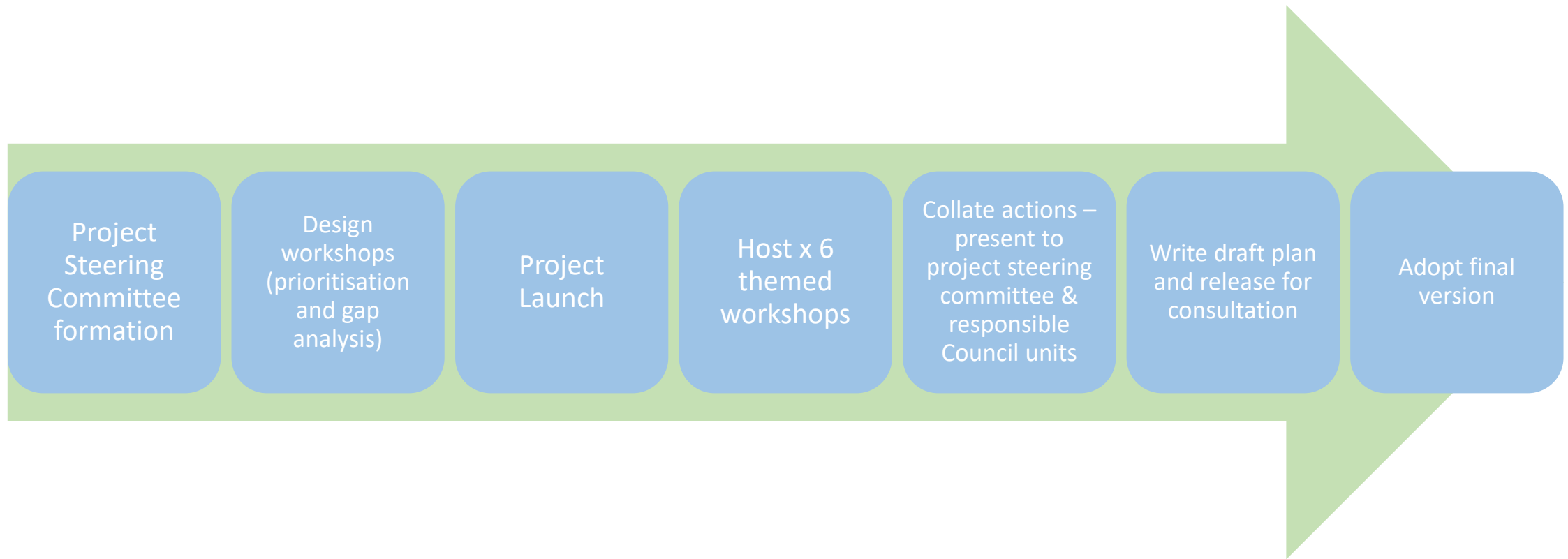


Why this model?

- Semi-rural, decentralised shire
- Each township (and community) has differing demographics and its own personality
- Some communities farther along the 'sustainability journey'
- Many long-running Landcare and Friends groups that focus action within their own patch of the shire.

Cool-ER Changes

Developing the shire-wide Climate Emergency Plan



Macedon Ranges Shire Council Climate Emergency Plan

2023-2030

NURTURE NATURE



CLIMATE-READY COMMUNITIES



POST FOSSIL FUELS



HEALTH + WELLBEING



WASTE + THE CIRCULAR ECONOMY



RESPONSE + RECOVERY



What's next?

Climate Emergency Advisory Committee

- Community and Council working group

Community Climate Action Grants

- Funding opportunity to implement Community Climate Action Plans
- Partnering with Macedon Ranges Community Enterprises

Climate KPI's

- For senior Council roles

Climate Emergency Plan action tracker

- Updated quarterly for heightened transparency

Formal partnership with local Sustainability Group

- To enhance community leaders capacity

EV infrastructure mapping

- Maximises community benefit over profitability

Council training on climate change

- Broadening the responsibility outside of the Environment Unit

Youth Climate Network

- Collaborating with Youth Unit and school Sustainability teams



QUESTIONS AND ANSWERS

Go to: **slido.com**

Enter event code: **9445716**



**Please move
immediately to your
next break-out room –
the next session will
start at 2:20PM.**



Not sure where to go?

Check the program:



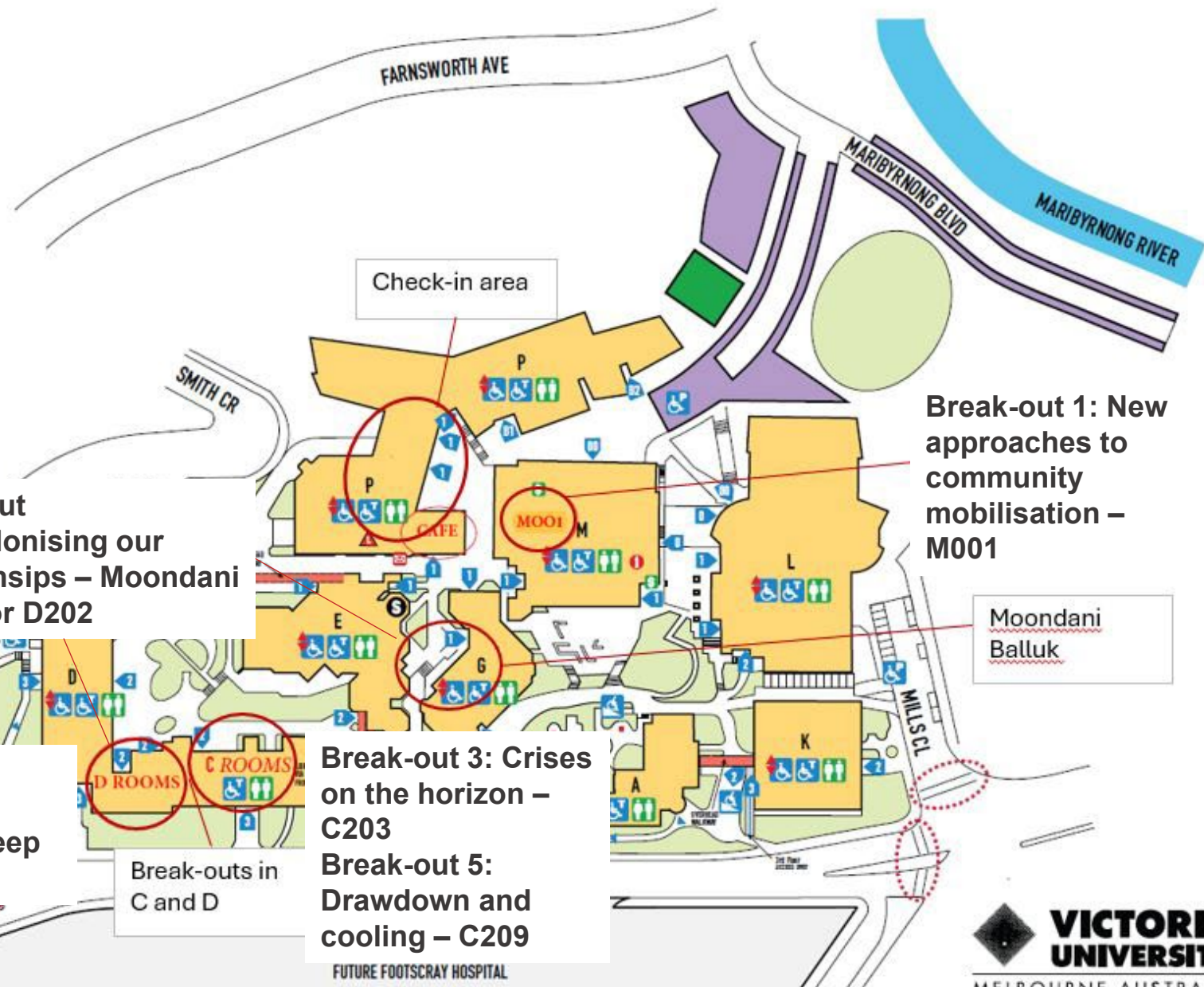


FOOTSCRAY PARK CAMPUS ACCESS AND MOBILITY MAP



LEGEND

- Accessible Parking
- Accessible Toilet
- Accessible Lift
- Steep Gradient
- Toilets
- Public Telephone - SMS
- Bus Stop
- ATM
- Student Service Centre
- Car Parks
- University Buildings
- Overhead Walkways
- Tennis Courts
- Bar-B-Q
- Accessible Building Entry
- Library
- Traffic Sign
- Security



Updates:



Break-out 4: Decolonising our partnerships – Moondani Balluk or D202

Break-out 1: New approaches to community mobilisation – M001

Moondani Balluk

Break-out 2: Council mobilisation deep dive – D200

Break-out 3: Crises on the horizon – C203

Break-out 5: Drawdown and cooling – C209

Break-outs in C and D